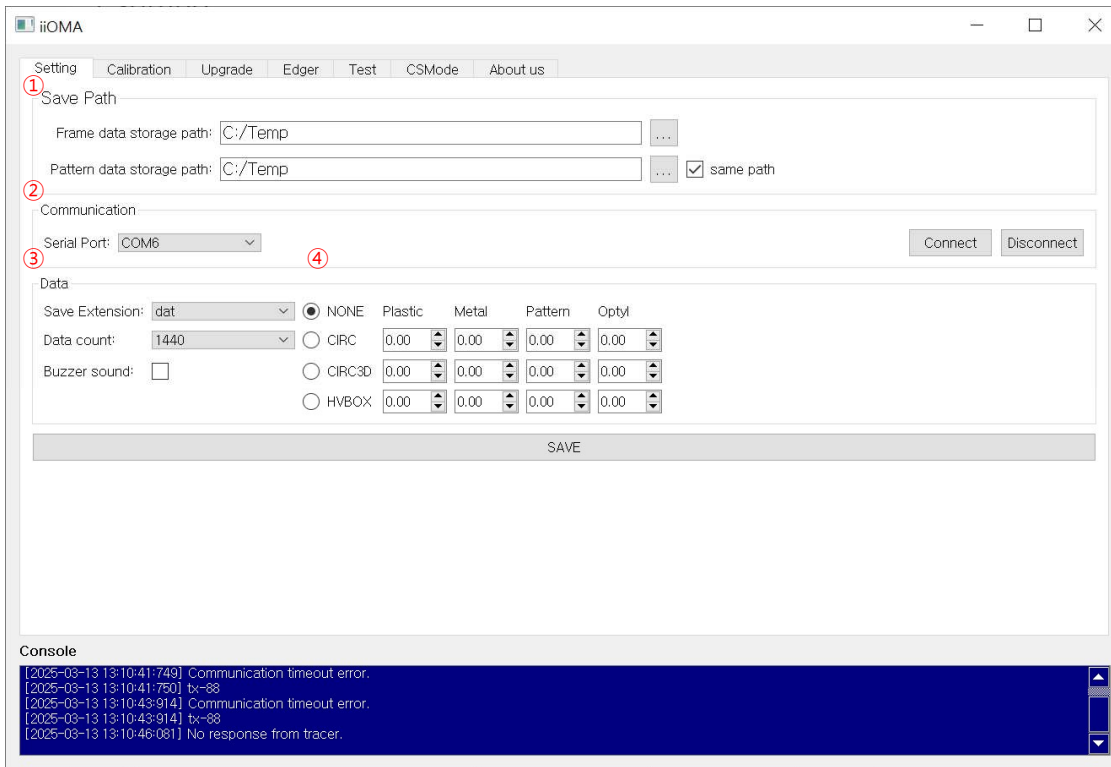


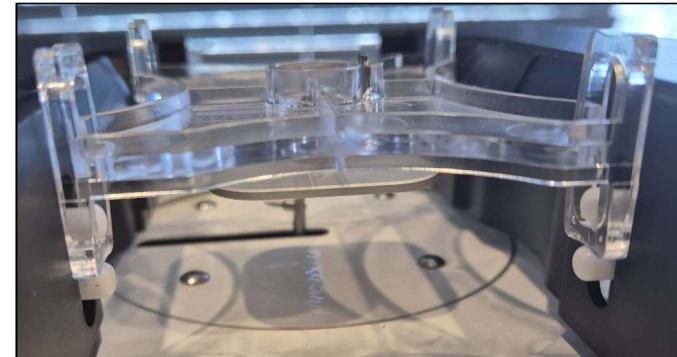
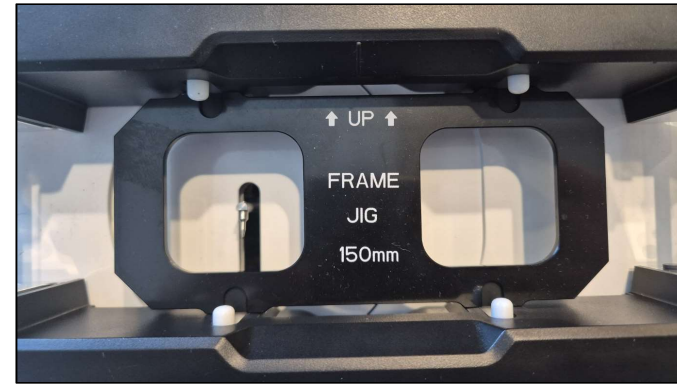
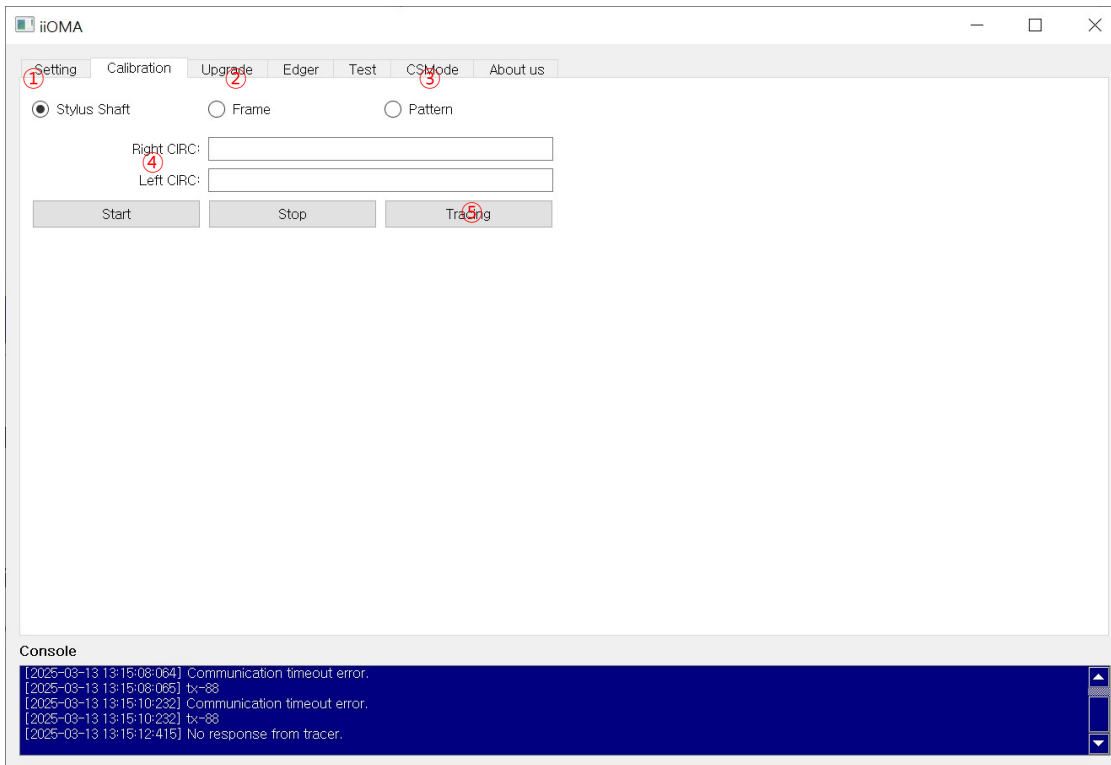
iiOMA v01.10.00 User Manual

1.Setting



- ① Storage locations for JOBs generated through iiOMA can be specified separately for Frame and Pattern.
- ② Serial port configuration and connection/disconnection are supported.
- ③ The file extension and shape resolution (number of points) for data generated through iiOMA can be modified.
- ④ The default value for shape size adjustment when generating data through iiOMA can be specified.

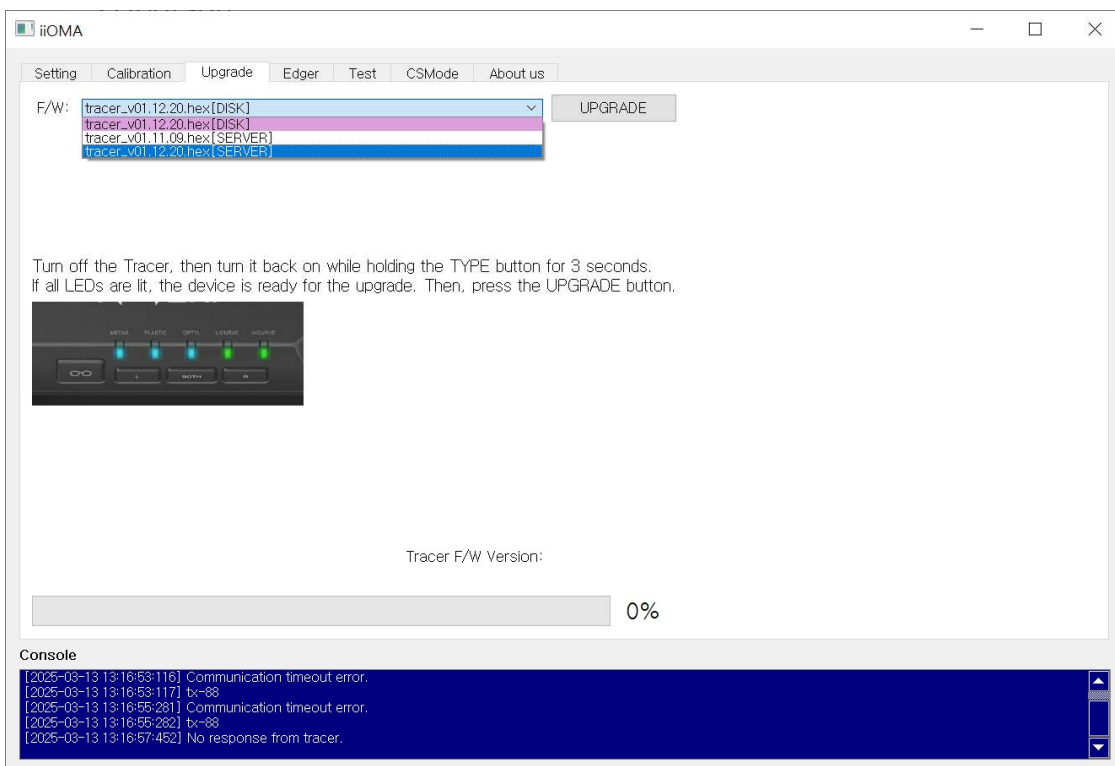
2. Calibration



JIG mounting method

- ① Calibration to optimize the reading process by measuring the sensitivity and weight of the stylus shaft.
- ② Frame Calibration.
- ③ Pattern Calibration.
- ④ Displays the perimeter value after calibration.
- ⑤ Button for reading only to check the perimeter value after calibration.

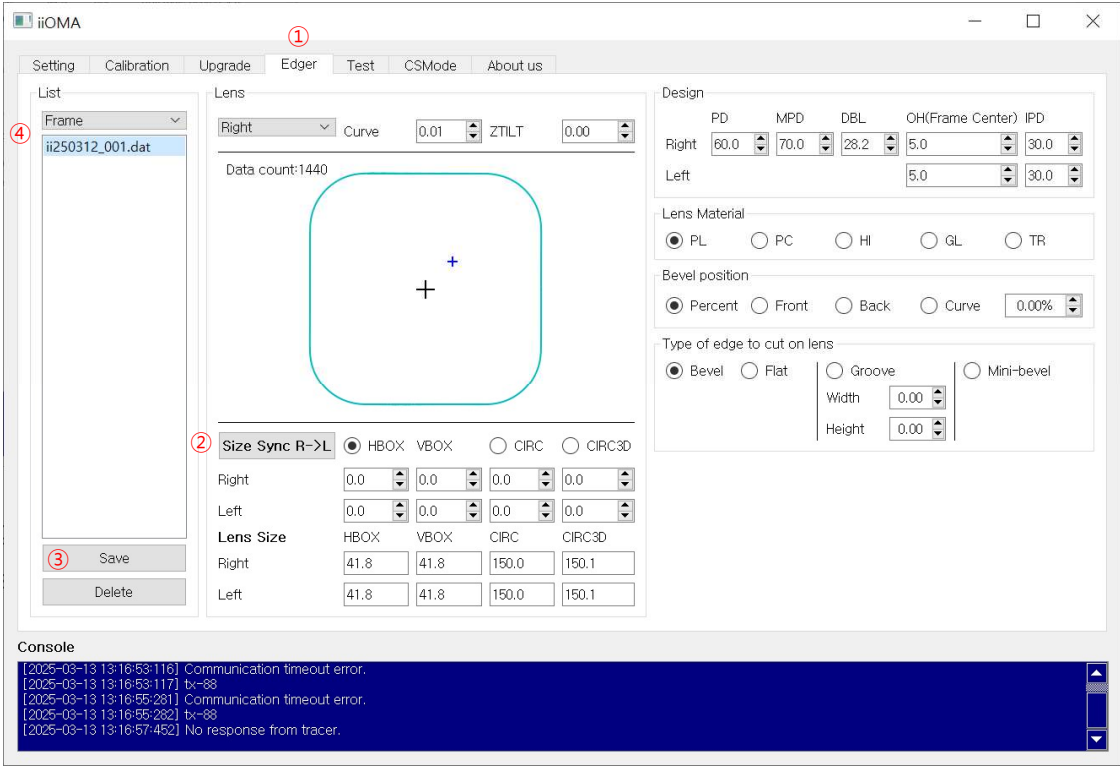
3.Upgrade



Appearance of the device in upgrade-ready state.

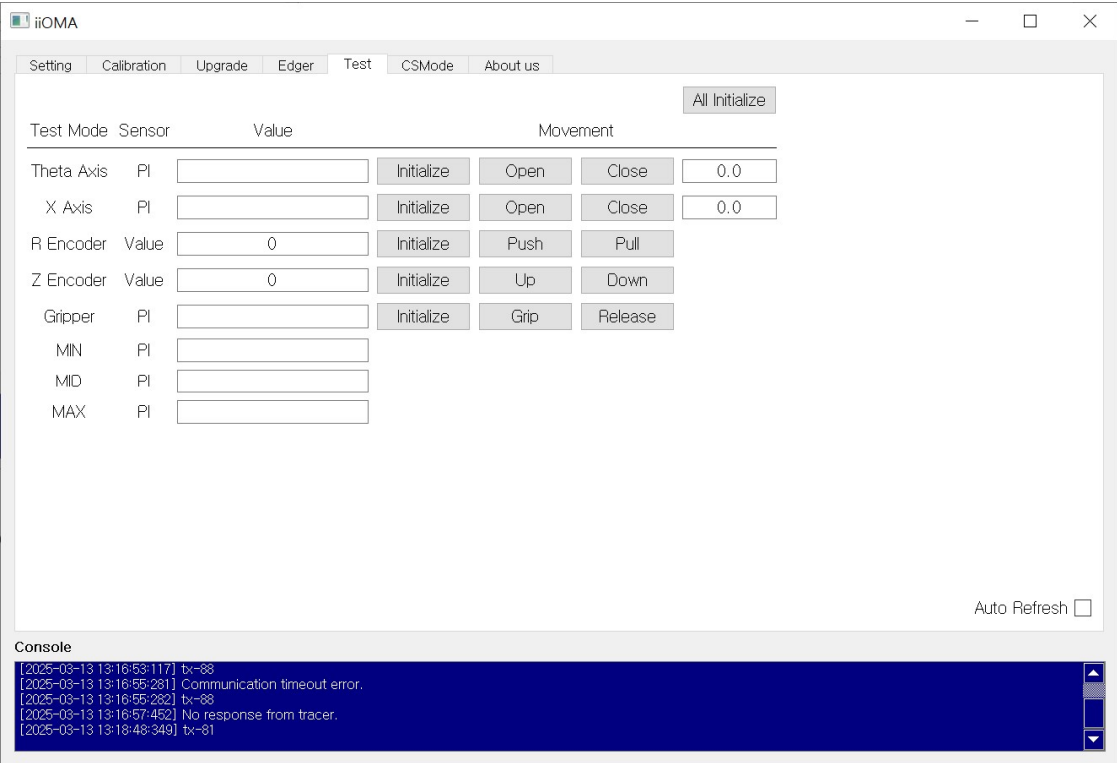
- ① The upgrade screen displays available updates. When connected to the internet, the latest software version is retrieved.
 The most recent version from "Version Name [SERVER]" is selected and downloaded automatically.
- ② Turn off the Tracer device, then turn it back on while holding the TYPE button. Keep the button pressed for 3 seconds.
- ③ If all LEDs on the device are illuminated, press the UPGRADE button to initiate the upgrade process.
 The upgrade will start within 5 seconds after pressing the button.

4.Edger



- ① This screen allows entry of basic design information for data generated through iiOMA.
- ② The lens shape size can be adjusted using VBOX, HBOX, perimeter length, and 3D perimeter length, taking the curve into account.
- ③ Double-click the JOB name to rename it.
- ④ Save button for saving the edited JOB.

5.Test



① This screen is the test mode, allowing you to check the status of functions and sensors.